

2018
SEASON PREMIER



**KOMPACT
KLICKFLOOR**
INNOVATIVE FLOORING SYSTEM

INTRODUCING A **CREATIVE
REVOLUTION** IN LUXURY
VINYL FLOORING.

www.klickfloor.co.uk

KOMPACT **KLICKFLOOR**

INNOVATIVE FLOORING SYSTEM

EACH VINYL FLOOR TILE RECREATES THE SUBTLE TEXTURES OF NATURAL WOOD AND STONE. BRINGING A WARMTH AND QUALITY TO ANY ROOM IN YOUR HOME.

THE FLOATING FLOOR SYSTEM IS BROUGHT TO YOU BY KOMPACT. IT DOES NOT REQUIRE ANY OF THE PANELS TO BE FIXED OR GLUED TO THE FLOOR. THE FLOORING USES A LICENSED AND PATENTED UNICLIC TONGUE AND GROOVE SYSTEM, ALLOWING EACH PIECE TO BE LOCKED PERFECTLY INTO PLACE FOR A STUNNING FINISH.

WHEN THE PRODUCT IS FITTED INTO PLACE IT WILL PROVIDE THE SAME AESTHETICS AS A 'GLUED DOWN LUXURY FLOOR', WITHOUT ALL THE PREPARATION WORK AND THE FITTING HASSLES YOU WOULD ASSOCIATE WITH GLUED DOWN FLOORING.



Whatever your taste,
Whatever your space ...

Bring warmth and character into every room of your home with the authentic natural look of Klickfloor luxury vinyl flooring. Hard wearing enough for demanding public spaces and busy homes, beautiful enough to make any floor magnificent, there's a Klickfloor design for you - whatever your taste and whatever your space.



KITCHENS
BATHROOMS
HALLWAYS
LIVING ROOMS
BEDROOMS
DINING ROOMS



TILE SIZE
324 x 655mm
1.49m²



WOOD PLANK SIZE
191 x 1316mm
1.76m²



LUXURY VINYL **KLICKFLOOR**

A PERFECT FOUNDATION ON WHICH TO BUILD STUNNING SPACES

GET THE NATURAL LOOK OF WOOD AND STONE FLOORING WITH THE ADDED DAY TO DAY ADVANTAGES OF LUXURY VINYL FLOORING (LVT). STUNNING WOOD AND STONE EFFECTS ARE PAINSTAKINGLY RECREATED ACROSS OUR RANGES WITH BEAUTIFUL DEPTH OF COLOUR. OUR IMPRESSIVE COLLECTION EVEN INCLUDES A REGISTERED EMOSS TEXTURE WHICH ALLOWS YOU TO SEE AND FEEL GRAINS, GROOVES AND KNOTS JUST LIKE REAL WOOD.

THE EASY MAINTENANCE OF LUXURY VINYL FLOORING (A SIMPLE WEEKLY MOP OR BRUSH KEEPS THE FLOOR LOOKING AS GOOD AS NEW) TOGETHER WITH GREAT SOUND AND HEAT INSULATION PROPERTIES ENSURES THAT LUXURY VINYL FLOORING IS A GREAT, COST EFFECTIVE ALTERNATIVE TO THE REAL STONE OR WOOD FLOORING.

You can be assured of our meticulous attention to detail to recreate and bring all the authenticity and elegance of real wood and stone into either your home or business.

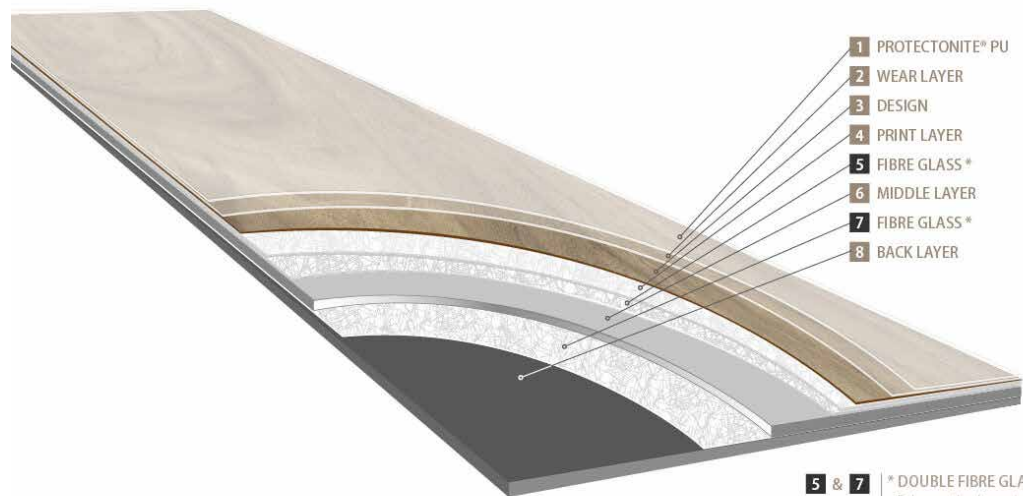
All KlickFloor luxury vinyl flooring uses a unique printing technique to make our designs razor-sharp together with a structure press to accurately re-create the subtle textures found in wood grains and stone grooves. Klick HD+ goes one step further with an actual registered emboss texture which brings real knots and grooves into the flooring.





KLICKFLOOR LUXURY VINYL FLOORING IS:

- Moisture-resistant - perfect for slippery areas such as kitchens or bathrooms
- Scratch and scuff resistant - due to a unique Protectonite PU wear-layer
- Slip resistant - featuring a top R10 rating
- Easy to clean and maintain - just a simple brush or mop
- Great at sound and heat insulation - no more cold stone under your feet
- Easy to install - thanks to KCLICK technology; no adhesive, no fuss
- Dependable and durable - with a 20 year guarantee available
- Environmentally friendly - made with 50% recycled materials with major eco-credentials
- Designed to reflect unique textures and patterns found in natural wood and stone flooring - be sure to view Impress which features a unique registered emboss texture



5 & 7 * DOUBLE FIBRE GLASS
Enhances the dimensional stability of the product.

KOMPACT **KLICKFLOOR WOOD**

INNOVATIVE FLOORING SYSTEM

12 YEARS DOMESTIC | 5 YEARS COMMERCIAL WARRANTY

BRING WARMTH AND CHARACTER INTO EVERY ROOM OF YOUR HOME WITH THE AUTHENTIC NATURAL LOOK OF KLICKFLOOR LUXURY VINYL FLOORING.

HARD-WEARING ENOUGH FOR DEMANDING PUBLIC SPACES AND BUSY HOMES, BEAUTIFUL ENOUGH TO MAKE ANY FLOOR MAGNIFICENT, THERE'S A KLICKFLOOR DESIGN FOR YOU – WHATEVER YOUR TASTE AND WHATEVER YOUR SPACE.

PINE RANGE



APULCO WHITE PINE
24115N



MEXICAN PINE
24242



SWEDISH PINE
24966



CARRIBEAN PINE
24876

WALNUT RANGE



SACRAMENTO WALNUT
28857

OAK RANGE



MONTERREY OAK
24270



TEXAS OAK
24840



CALIFORNIA OAK
24866



WASHINGTON OAK
24989





WOOD PLANK SIZE
191 x 1316mm
1.76m²



KLICKFLOOR **WOOD**

If you're looking to create an inviting commercial space that's rich in colour and texture, while giving the protection you need from a high traffic area, then look no further than the Oak range.

The beautiful rendered grain of the Pine range makes these designs a heart favourite with the deep rich colouring.



KLICKFLOOR TILE

The Klickfloor Tile Range of domestic floor designs combine the beauty and elegance of natural stone, but with the softness and comforting warmth you just cannot get with authentic materials. Offering durability and aesthetic impact in any room of your home, Klickfloor Tile is a range you'll love and enjoy.

TILE SIZE
324 x 655mm
1.49m²



KOMPACT **KLICKFLOOR TILE**

INNOVATIVE FLOORING SYSTEM

12 YEARS DOMESTIC | 5 YEARS COMMERCIAL WARRANTY

THE KLICKFLOOR TILE RANGE INCORPORATES A STYLISTIC & ABSTRACT DESIGN OF METALLIC HUES OFFERING A UNIQUE, CONTEMPORARY LOOK TO TRANSFORM YOUR SPACE. A LOOK THAT IS INTENSIFIED BY THE SHINING TOUCHES OF SUSPENDED SILVER, WHICH REFLECT PURE LIGHT FROM THE FLOOR.



VOLCANO RANGE



VOLCANO BLANCO
46130



VOLCANO GRIS
46930



VOLCANO BRONZE
46470



VOLCANO NEGRO
46990

STONE RANGE



SILVER STONE
40950



GRAMPIAN SLATE
36970

Whatever your taste and
whatever your space ...

There's a KlickFloor design for you.

KOMPACT KLIKKFLOOR WOOD HD

INNOVATIVE FLOORING SYSTEM

20 YEARS DOMESTIC | 12 YEARS COMMERCIAL WARRANTY

KOMPACT KLIKKFLOOR WOOD HD ALLOWS YOU TO ACHIEVE A PREMIUM LOOK WITH EASE, THANKS TO THE RICH BROWNS AND DARKER AREAS THAT COMBINE IN STUNNING SWIRLS. AN IDEAL CHOICE FOR HIGH IMPACT AREAS WITH A HIGH LEVEL OF FOOTFALL.

AS WELL AS THE DARKER COLOURS, THE LIGHTER SHADES AVAILABLE IN THE WOOD HD RANGE PROVIDE PROFESSIONAL, MODERN FLOORS FOR COMMERCIAL AND RESIDENTIAL USE.

PINE RANGE



JAPANESE WHITE PINE
24115

OAK RANGE



CEDROS GREY OAK
24935



COAST OAK
24219



ARKENSAS OAK
24432



BONYTON OAK
24837



CANYON OAK
24244



OREGON OAK
24820



CANBY OAK
24870



GAMBEL OAK
24572



HARVARD OAK
24860





KLICKFLOOR **WOOD HD**

A pale base colour is strengthened by a delicate darker gradation throughout the design, with sparse knotting adding to the feeling of uncluttered, unpretentious refinement.

The intriguing grain with a beautifully detailed texture allows the perfect platform to your space.



WOOD PLANK SIZE
191 x 1316mm
1.76m²





KLICKFLOOR TILE HD

TILE SIZE
324 x 655mm
1.49m²



Soft shades and a delicate pattern make this a great all-rounder. Perfect for rustic kitchens and modern bathrooms, plus everything in between, it creates the perfect base for any room.



METAL STONE
40937



COPPER STONE
40862

KOMPACT **KLICKFLOOR TILE HD**

INNOVATIVE FLOORING SYSTEM

20 YEARS DOMESTIC | 12 YEARS COMMERCIAL WARRANTY

WHEN HIGH DESIGN DEMANDS HIGH SPECIFICATIONS, TRUST KLICKFLOOR TILE HD WITH DELICATE DESIGNS CRAFTED TO COMPLEMENT MODERN MATERIALS AND ARCHITECTURAL FEATURES. THESE FANTASTIC TIMELESS DESIGNS ALSO PROVE AN IDEAL MATCH FOR A MORE CLASSIC RETREAT.

JURASSIC STONE RANGE



CALLOVIAN CREAM
46110



BATHONIAN WHITE
46191



TOARCIAN TAUPE
46820



AALENIAN GREY
46956

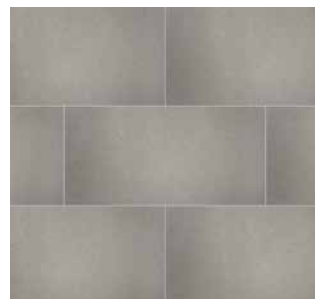


BAJOCIAN BLACK
46975

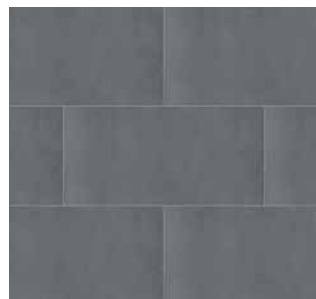
CERAMICO RANGE



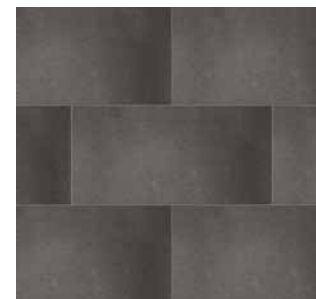
CERAMICO ARGENTO
KKP46915



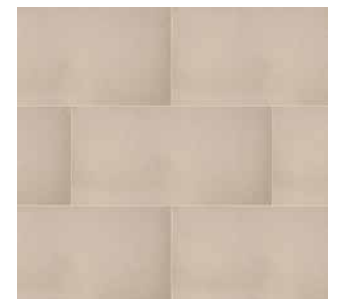
CERAMICO GRIS CLARO
KKP46920



CERAMICO OSCURO
KKP46950



CERAMICO GRIS
KKP46970



CERAMICO BEIS
KKP46210

KOMPACT **KLICKFLOOR WOOD HD+**

INNOVATIVE FLOORING SYSTEM
20 YEARS DOMESTIC | 12 YEARS COMMERCIAL WARRANTY

HIGH PERFORMANCE MEETS HIGH CLASS IN THESE RICH KLICKFLOOR WOOD HD+ DESIGNS. THE OFFER OF APPEARANCE FAITHFULLY RECREATION OF NATURAL WOOD, WHICH LOOKS EQUALLY AT HOME IN TRADITIONAL AND MODERN SETTINGS.

OAK RANGE



ORIENTAL WHITE OAK
53117



ARAZONA WHITE OAK
53926



PERSIAN OAK
53830



CARMEN OAK
53850



CHESTNUT OAK
53870

HICKORY RANGE

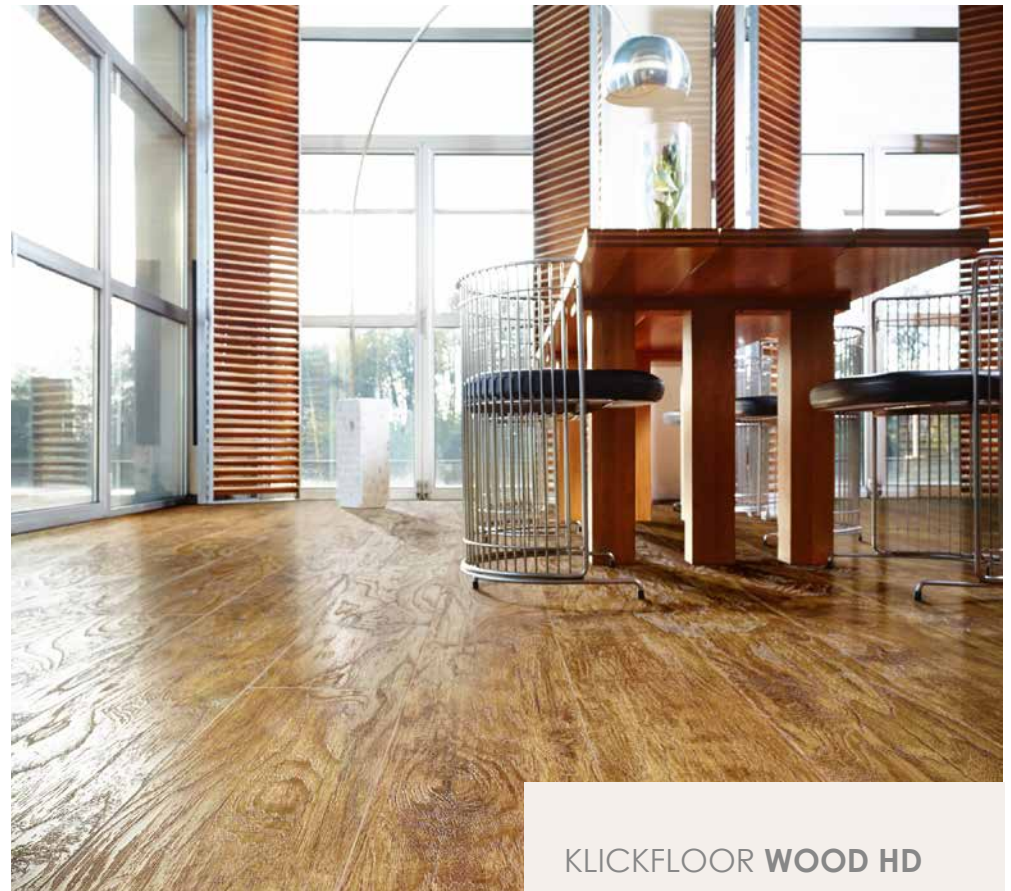


PECKAN HICKORY
57422

KLICKFLOOR WOOD HD+

High performance meets high class in this rich design that offers the faithfully recreated appearance of natural wood, which looks equally at home in traditional and modern settings.





CLICKFLOOR WOOD HD



WOOD PLANK SIZE
191 x 1316mm
1.76m²



Lend your home extra warmth with the living tones of KlickFloor Wood HD+. With the glorious range of Oaks to the rich Hickory Designs, each provides a timeless, classic feel to any room.

Make the most of your space, fall in love with the HD+ range from KlickFloor.



KLICKFLOOR TILE HD+

TILE SIZE
324 x 655mm
1.49m²



The metallic hues of this abstract design offer a unique look for contemporary spaces; a look that is intensified by the shining touches of suspended silver, which reflect pure light from the floor.



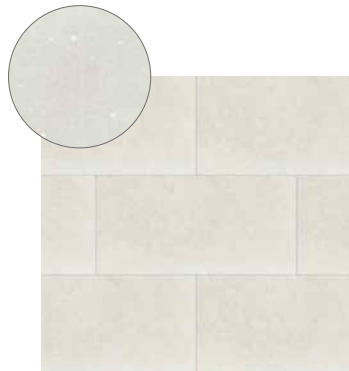
KOMPACT **KLICKFLOOR TILE HD+**

INNOVATIVE FLOORING SYSTEM

20 YEARS DOMESTIC | 12 YEARS COMMERCIAL WARRANTY

THE KLICKFLOOR TILE HD+ RANGE OF STUNNING DESIGNS ADD A PLAYFUL MIXTURE OF DARKER AND LIGHTER TONES COMBINING TO CREATE A DESIGN THAT IS PERFECT, LUXURIOUS, FULL OF GLAMOUR AND PIZZAZZ.

STARSTONE RANGE



ASTRA WHITE
46148



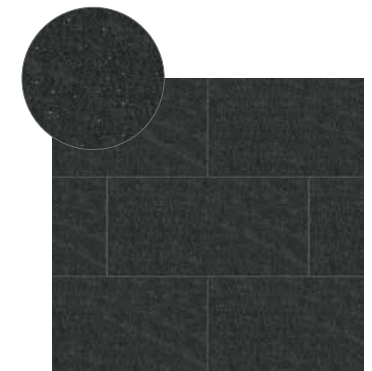
SCORPIUS SILVER
46919



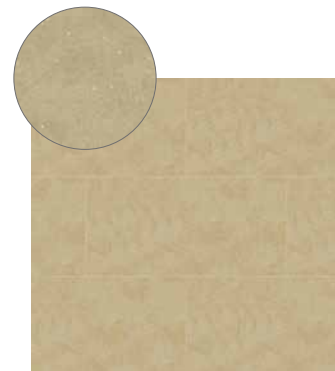
GRAFFIAS GREY
46939



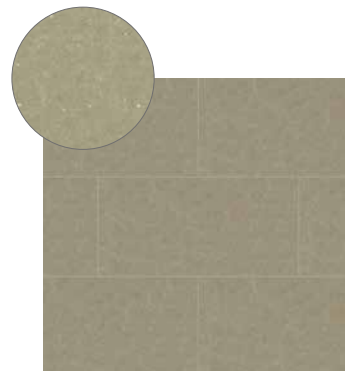
AVIOR ANTHRACITE
46959



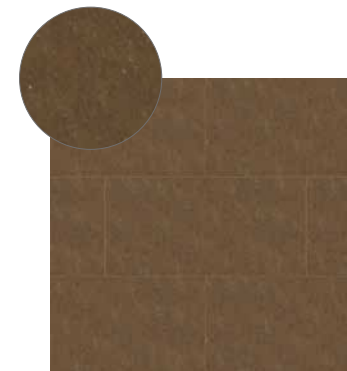
ORION BLACK
46985



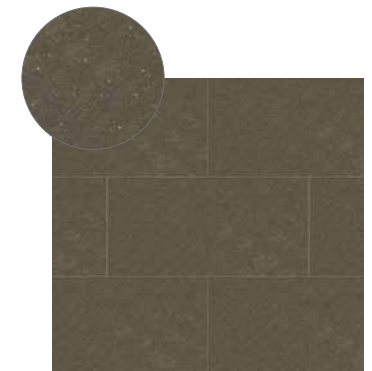
CYGNUS CREAM
46250



SIRIUS GREY
46280



CORVUS BRONZE
46880



NEMBUS BROWN
46860



KOMPACT **KLICKFLOOR ACCESSORIES**

INNOVATIVE FLOORING SYSTEM

WE PRIDE OURSELVES IN BEING SYNONYMOUS WITH EFFORTLESS INSTALLATION. OUR PRODUCTS GUARANTEE A QUICK AND HASSLE-FREE PLACING, BOTH FOR THE OCCASIONAL AND PROFESSIONAL INSTALLER.

WHEN IT COMES TO FLOORING PREPARATION AND INSTALLATION, THE XTRAFLOOR RANGE HAS IT COVERED. OUR RANGE OF PROFILES, UNDERLAY AND MAINTENANCE PRODUCTS PROVIDE THE PERFECT PLATFORM FOR YOUR DREAM FLOOR.



XTRAFLOOR UNDERLAYS



BEDROOMS

SILENT UNDERLAY
KKXSUNDERLAY
12.5M2, 1.1MM THICK



KITCHEN

BASE UNDERLAY
54KKXUNDERLAY
10M2, 1.5MM THICK



BATHROOMS

FLEX PRO UNDERLAY
KKXPUNDERLAY
6.5M2, 1.8MM THICK

XTRAFLOOR PROFILES



END PROFILE
KKXEND
2000X18X5MM



T-BAR EXPANSION
KKXEXPANSION
2000X24X5



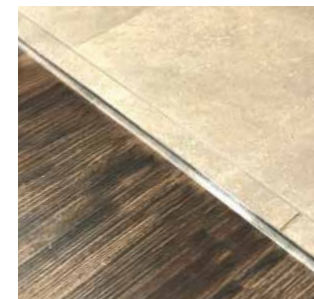
MULTI-PURPOSE PROFILE
KKXMULTIPROFILE
1860X45X12MM



STAIR EXTERNAL PROFILE
KKXSTAIREXT
2400X42X28MM



STAIR INTERNAL PROFILE
KKXSTAIRINT
2400X27X27MM



T-BAR PROFILE
KKXTBAR
900X40X5MM



PREMIUM SKIRTING BOX
KKXSKIRTING
6 X (2400X60X12.5MM) = 14.4M





Xtrafloor

Xtrafloor, designed to bring you everything you need to create and maintain luxury vinyl floors of distinction. Xtrafloor offers flooring solutions for every stage of the process – before during and after installation – for commercial and residential use.



WHILE CLEANERS CONTAINING SOAP OR UNSUITABLE DETERGENTS MAY LEAVE A HARD-TO-REMOVE FILM OR RESIDUE ON THE SURFACE, THE RIGHT MAINTENANCE PRODUCTS WILL EXTEND THE LIFE OF YOUR FLOOR.

XTRAFLOOR MAINTENANCE PRODUCTS



CONSUMER CARE KIT
KKXCAREKIT



DAILY CLEANER 0.75L
KKXCLEANERDR



SCRATCH FIX KIT
KKXSCRATCHFIX

XTRAFLOOR TOOLS



HAND ROLLER
KKXHANDROLLER

INSTALLATION GUIDELINES

A PERFECT FOUNDATION ON WHICH TO BUILD STUNNING SPACES

STORAGE & TRANSPORTATION

Cartons should be stored and transported on a flat surface in neat stacks, always store the cartons flat and never put them on-end. Do not store the cartons in very cold (less than 2°C) or very warm (more than 40°C) or humid places.

PRIOR TO INSTALLATION VISUAL INSPECTION

Please inspect product prior to installation. Check that the colours correspond to those ordered, the quantities are correct and there is no visible damage to the boxes. Check the vinyl planks or tiles during installation for any visible defects. Do not install any planks or tiles that display any imperfections.

We recommend that you always use materials from a single production batch for each installation, as we cannot guarantee a shade match between different batches.

SUITABILITY

- Kompact KlickFloor design floors can be laid on concrete, cementitious screed, anhydrite (calcium sulphate), timber, plywood, particleboard and ceramic tiles, which have been suitably prepared (see Floor Preparation).
- Kompact KlickFloor design floors can be used with traditional waterbased underfloor heating and cooling systems. Electric wire systems are not recommended unless the system is encased in a minimum of 9mm of suitable leveling compound. Direct contact with wired heating systems must be avoided. If in doubt seek further advice.
- Kompact KlickFloor design floors is only suitable for indoor installation.

- Seasonal temperature conditions: Kompact KlickFloor design floors can be used in any indoor situation, such as temperature controlled conservatories and holiday homes. Keep under all conditions the temperature between 6°C and 35°C. Avoid rapid temperature increases of more than 5°C per 12 hours.

- For commercial applications where roller castor chairs or heavy rolling loads are to be used we strongly recommend the use of Kompact KlickFloor HD+. However, if you do want to use Kompact KlickFloor, please contact the Kompact Technical Support Team.

QUALITY OF THE SUBFLOOR

Knowledge of the composition and construction provides valuable information that allows you to correctly check the acceptable humidity, compressive and tensile strength of the subfloor. In addition it tells you what type of floor preparation, leveling compound, and possible moisture barrier you may need during the installation process. When there is ambiguity or doubt about the quality or composition of your subfloor check with your floor preparation, leveling compound manufacturer/supplier.

SUBFLOOR PREPARATION

IRREGULARITIES IN THE SUBFLOOR
Good preparation is essential for trouble-free installation. It is vital for an excellent Kompact KlickFloor design floors finish. The appearance of Kompact KlickFloor design floors will only be as good as the quality of the base over which it is installed. Any irregularities in the subfloor will show through the finished floor and must be suitably prepared before installation.

The subfloor must be hard, smooth, clean and dry, as well as being free from defects and fit for purpose. When required, scrape off and remove old adhesives and loose laying leveling compound. Make sure the subfloor is flat and free from chemical substances and other contamination.

Unevenness of the subfloor may not be greater than 2mm measured over a width of 200cm.

A suitable plywood/leveling compound should be selected to ensure that no irregularities show through to the surface of the finished floor. However, the selection of suitable materials, including plywood, smoothing/ leveling compounds and any ancillary products, is dependent upon the occupational use of the area and must be agreed by the supplier of the preparative materials and the flooring contractor. All floor preparation materials used must be used in accordance with the manufacturer's recommendations and in accordance with the national standards for resilient floor coverings.

ACCLIMATISATION

Kompact KlickFloor design floors must acclimatise in the room of installation, or an equivalent area for at least 24 hours prior to installation, or until such time as the product has achieved an ambient temperature. Again, this is a minimum temperature of 18°C and a maximum of 27°C.

- Unpack the Kompact KlickFloor design floors and check all planks or tiles in daylight for possible defects or discrepancies in colour.
- Stack the plank or tiles in straight piles away from heating, cooling or windows with direct intense sunlight. This is to achieve a gradual acclimatisation.

TEMPERATURE CONDITION BEFORE INSTALLATION

Kompact KlickFloor design floors should be installed with a room temperature of between 18°C and 27°C and a floor temperature of above 15°C.

Installations in areas colder than recommended will influence the installation properties of Kompact KlickFloor design floors. The planks or tiles will be less flexible, cutting will be harder and small pieces difficult to cut out. The lower the temperature, the more difficult the installation. For installation in areas warmer than recommended, we advise consultation with your local retailer/ installer on how to create the appropriate installation conditions.

PRIOR TO INSTALLATION TEMPERATURE CONDITION DURING INSTALLATION

A constant temperature, fluctuating no more than 5°C per day, not below the required 18°C room temperature and 15°C subfloor temperature, should be maintained 24 hours before, during and 72 hours after installation.

UNDERFLOOR HEATING

Kompact KlickFloor design floors can be used with traditional water based underfloor heating systems, provided there is a constant room temperature of 18°C for the acclimatisation period, installation and for 72 hours after installation. 24 hours after installation the underfloor heating must be gradually increased by increments of





5°C per day until it reaches the standard operating temperature conditions, with a maximum operating temperature of 27°C. For the suitability of the system please check the manufacturer's instructions. For electric mat under floor heating, please refer to the manufacturers instructions.

UNDERFLOOR COOLING

Kompact KlickFloor design floors can also be installed over floor cooling systems. However, the supply temperature of the cooling water must not be reduced below the dew point temperature. Temperatures below this point will produce condensation and can therefore damage the floor covering. Thermostats in the room must never be set at a temperature which is more than 5°C lower than the room temperature.

RECOMMENDED UNDERLAY

Installing the correct underlay is paramount. Whether you require excellent sound control, a solution in a heavy duty environment or a base for general purposes, Xtrafloor™ has an underlay suitable for your requirements.

1. Xtrafloor™ Base: Residential Use
 - Improved sound insulation ($\Delta L_w=13$ dB with 4.5 mm Kompact KlickFloor)
 - Protective foil and lightly tackified film for easy installation.
 - Suitable for underfloor heating and cooling
 - Provides excellent dimensional stability
 - Not suitable for roller castor chairs or heavy duty use
2. Xtrafloor™ Flex Pro: Heavy Duty Use
 - Improved sound insulation ($\Delta L_w=13$ dB with 4.5 mm Kompact KlickFloor)
 - Protective foil and pressure sensitive adhesive film for easy installation.
 - Suitable for underfloor heating and cooling
 - Provides excellent dimensional stability
 - Suitable for roller castor chairs & rolling loads up to 250kg
3. Xtrafloor™ Silent : Superior Sound Insulation for Residential Use
 - Improved sound insulation ($\Delta L_w=21$ dB and $\Delta L_{lin}=10$ dB with 4.5 mm Kompact KlickFloor)
 - Anti-slip coating for quick and easy installation
 - Suited for underfloor heating and cooling
 - Not suitable for roller castor chairs or heavy duty use and areas with exposure to direct sunlight e.g. conservatories or excessive fluctuations in temperature.

Xtrafloor™ Base & Xtrafloor™ Flex Pro, as recommended above, can smooth out small irregularities of a maximum 5mm wide and 2mm deep. This allows for installation over existing floor coverings, such as ceramic tiles, linoleum, compact PVC floors and wooden floorboards.



INSTALLATION OF UNDERLAY

Lay the sheets butted, edge-to-edge, at a 90 angle to the laying direction of the new floorcovering. Xtrafloor™ Base and Xtrafloor™ Flex-Pro is to be laid PET Film side up and Xtrafloor™ Silent is to be laid anti-slip side up. There is no need to fix one sheet to another.

A section at a time, separate the PET-film from the underlay sheet (not applicable for Xtrafloor™ Silent) and begin laying your new floor according to the fitting instructions. Do not use primer or other adhesive.

REQUIRED EXPANSION GAP

- Moduleo® Click is a "floating" floor. The panels should not be glued or fixed to the subfloor below.
- For areas larger than 50 m², a 5mm expansion joint must be incorporated at the perimeter of the room/area.
- For areas larger than 200 m², it is recommended to create an expansion joint of 10mm around the perimeter of the room/area.
- In addition, should a single wall or run be longer than 20 linear meters, then a 5mm expansion gap should be allowed within the floor surface.
- It is recommended that an expansion gap is left between doorways, especially where there are temperature differences between different areas.



Ecological

Each KlickFloor contains up to 50% recycled materials and can be recycled at the end of their product life. During their lifespan, our floors are user-friendly, as well as eco-friendly. Maintenance doesn't require harsh chemicals, while their heat insulating properties mean that you can lower your thermostat and thus, your energy consumption.

INSTALLATION GUIDELINES

A PERFECT FOUNDATION ON WHICH TO BUILD STUNNING SPACES

STEP BY STEP INSTALLATION

1. The Kompact KlickFloor system panels can be joined in two different ways, either tongue-in-groove or groove-under-tongue. The simplest procedure, however, is groove-under-tongue, working from left to right.

2. The advantage of the Kompact KlickFloor system is that it allows you to choose your own starting position. You can start in the middle of the room/area and work to both sides, or start at the wall and work your way in.

3. Determine the installation direction of the Kompact KlickFloor design floor. Measure the room carefully to determine whether the first row of panels needs to be narrowed. If not, the lower groove lip of the first row of panels needs to be removed. Use a utility knife to neatly cut off the lower groove lip.

4. Begin by laying the first row in the corner of the room on your left hand side as you are looking at the wall. Always work from left to right and with the tongue towards yourself.

5. Lay the first row in a straight line and click the head ends together. Put the short side of the profile into the head end of the previous panel and press the panel downwards. It is recommended to use a hand roller for connecting the head ends so that the joint fits securely. We advise to use the Xtrafloor™ roller.

6. Use the spacers to fill out the contour of the wall so that the panels do not move and are 100% installed.

7. For the last piece, measure the last plank so that the required expansion gap is maintained. Do not lay the panel completely tight to the wall. Cut away the marked piece and fit the end panel in the

same way as the previous panels. When cutting the panel with a utility knife, make sure that you cut through the wear layer before breaking the panel.

8. For an attractive and natural appearance, we advise to use the piece left over from row 1 as the first piece in the following rows.

9. For the second/next row, take a new panel and decide how big the first piece must be (or use one of the left overs from previous rows). Make sure that the front seam is at least 20-30 cm different from the previous rows.

10. Fit the second row as you did for the first: start on the left hand side and slide the groove of the panel under an angle of about 25° over the tongue of the previous row, clicking the groove into the tongue by laying down the panel while pushing it firmly against the first row. Along the long edge, it is advisable to use a recoil or rubber hammer and tapping block, or cut piece of panel profile to tap the panels tightly together and to ensure the click mechanism is firmly locked.

11. Next, fit the second panel by sliding the groove under, at an angle of 25°, into the tongue of the previous row. Position the left corner of the head end against the previous panel and then drop the short side of the profile into the head end of the previous panel, push downward and press into place using a hand roller. Repeat until you reach the end of the row. Do not hammer the end joints into place.

12. Repeat steps 9 to 11 until all rows are complete, and only the last row needs to be placed.

13. To fit the last row of panels you will usually need to narrow them. Do this as follows: lay a panel on top of the previous row with the groove towards the wall, lay another panel upside down up to the edge of the wall and mark the panel underneath. Cut the panel to size and fit the last row.

14. Door-jambes and heating pipes also need to be individually fitted. First cut the panel to the right length, then place the panel next to the object and draw the correct fitting. Next, cut the panel to size. Door-jambes can also be sawn (undercut) to size if necessary. The Kompact KlickFloor can then be neatly installed underneath.

RECOMMENDED TOOLS:

- Tape measure
- Pencil
- Set square
- Utility knife
- Hand roller
- Recoil- or rubber hammer
- Tapping block
- Spacers for setting the rows in an uneven wall





MAINTAINING YOUR FLOOR

Appropriate maintenance procedures will help to preserve the appearance and will extend the life of a Kompact KlickFloor design floor. The frequency of maintenance will depend on the amount and type of traffic, degree of soiling, the floor colour and type. Kompact KlickFloor design floors have a Protectonite-PU lacquer on top of the resistant wear layer. This lacquer protects against soiling and makes overall maintenance easier. Protectonite also makes any post-treatment with protection polish unnecessary.

EXTERNAL CONDITIONS

The appropriate management of external conditions can help to protect the flooring, which saves time and expenses on cleaning and maintenance, and also extends its lifespan. Most soiling comes from an external source and is transported indoors by foot and rolling traffic. If dirt lodges under sliding furniture, the flooring will not only be soiled but will also suffer (light) damage in the form of scratches.

ENTRANCE MATS

A proper clean-off zone/mat is strongly recommended. It will reduce the soiling of the flooring by as much as 70%. Entrance mats, when properly serviced, can effectively remove abrasive materials from foot traffic and reduce the amount of transferred water. Kompact KlickFloor design floors recommends a minimum of two full strides of entrance matting. Where possible, prevent dirt from reaching the floor. A suitable barrier matting system will help prevent soiling and abrasive material from entering a building, assisting cleaning and maintenance.

Regularly clean the clean-off zone matting so that it functions optimally. Replace the clean-off mat when necessary.

Avoid rubber or latex backed mats, rubber furniture feet and castors, as these may leave permanent stains.

PROTECTION OF SLIDING FURNITURE

Place good quality protective felt pads under chair and table legs. Furniture cups should be used to avoid high point loading.

QUESTIONS & ANSWERS

DO I NEED TO USE UNDERLAY WITH KLIKKFLOOR?

Kompact only recommends the use of KlickFloor XtraFloor Underlay, which has been specifically designed for use with this product. XtraFloor Underlay will always enhance the performance of your KlickFloor, providing increased comfort, sound & heat insulation and will smooth out any irregularities in your subfloor. Use of any other underlay not designed for KlickFloor may invalidate your warranty.

HOW DO I CLEAN MY KLIKKFLOOR?

Your new KlickFloor should be swept / mopped or vacuumed regularly. Occasionally KlickFloor should be damp mopped using XtraFloor Routine cleaner. Kompact only recommend the use of KlickFloor XtraFloor Routine Cleaner & Maintainer. This will maintain the finish of your KlickFloor and maintain the SupaGuard coating on your KlickFloor. This should be supplied by your Retailer / Installer after installation or can be purchased online at www.leakerdirect.co.uk. For heavy domestic / commercial users, a 2.5ltr container is also available. Use of any other cleaning product may invalidate your warranty.

CAN MY KLIKKFLOOR BE USED WITH UNDERFLOOR HEATING?

Yes, but we recommend that KlickFloor must be acclimatised to the room and that the underfloor heating be on before and during installation (preferably around 18°C). Use of KlickFloor XtraFloor underlay will enhance the performance of your floor with underfloor heating. For electric mat under floor heating, please refer to the manufacturers instructions.

HOW LEVEL DOES MY FLOOR NEED TO BE TO INSTALL KLIKKFLOOR?

The finished appearance of your new KlickFloor will only be as good as the quality of the subfloor it is installed onto. Your installer should ensure that the subfloor has no irregularities greater than 5mm wide or

2mm deep. Use of XtraFloor underlay will smooth out small irregularities in your floor.

CAN I FIT KLIKKFLOOR OVER EXISTING CERAMIC TILES?

Yes, but as above, your installer should ensure that the subfloor is suitable, and use of XtraFloor underlay will enhance the installation.

HOW DO I CUT MY KLIKKFLOOR?

KlickFloor can be easily cut using a utility type knife. Once the surface is scored, a clean break snap apart.

IMPORTANT POINTS

VARIOUS KEY POINTS OF INFO

Klickfloor must always be stored flat on an even surface to avoid damage to the joint system.

Do NOT use any rubber backed / latex mats on top of KlickFloor, to prevent plasticisation which can discolour your KlickFloor.

Do not use abrasive cleaners of any type on your KlickFloor to prevent surface scratching.

If using products with different batch numbers, please ensure that your installer mixes the tiles / planks to ensure uniformity of colour.

Always use the furniture protection pads supplied in your XtraFloor Consumer Kit to prevent damage to your KlickFloor.

Always acclimatise your KlickFloor for at least 24 hours to the room before installation.

Always use an entrance mat to act as a clean-off area to protect the surface of your KlickFloor. Avoid use of rubber or latex backed mats as these may discolour your KlickFloor.

TROUBLESHOOTING

IDENTIFYING YOUR ISSUE

My KlickFloor joints are coming apart in certain areas – This is normally caused by either an uneven subfloor or the joint system not being correctly locked on installation. Please contact your installer to rectify

My KlickFloor has a 'whitish bloom' on the surface after contact with water - This is a harmless effect caused by a reaction with water by the SupaGuard surface coating. Once the water / damp contact is removed your KlickFloor will return to normal over a period of days, as the moisture disappears.

My KlickFloor is showing some scratching on the surface – This is normal for any hard floor, and can be alleviated by use of XtraFloor Routine Cleaner to maintain the SupaGuard surface of your KlickFloor



INTRODUCING A **CREATIVE REVOLUTION** IN LUXURY VINYL FLOORING.



Units 108-110, Howden Avenue
Newhouse Industrial Estate
Newhouse
ML1 5RX

T: 01698 831 010
F: 01698 831 188
E: Sales@Klickfloor.co.uk
www.klickfloor.co.uk