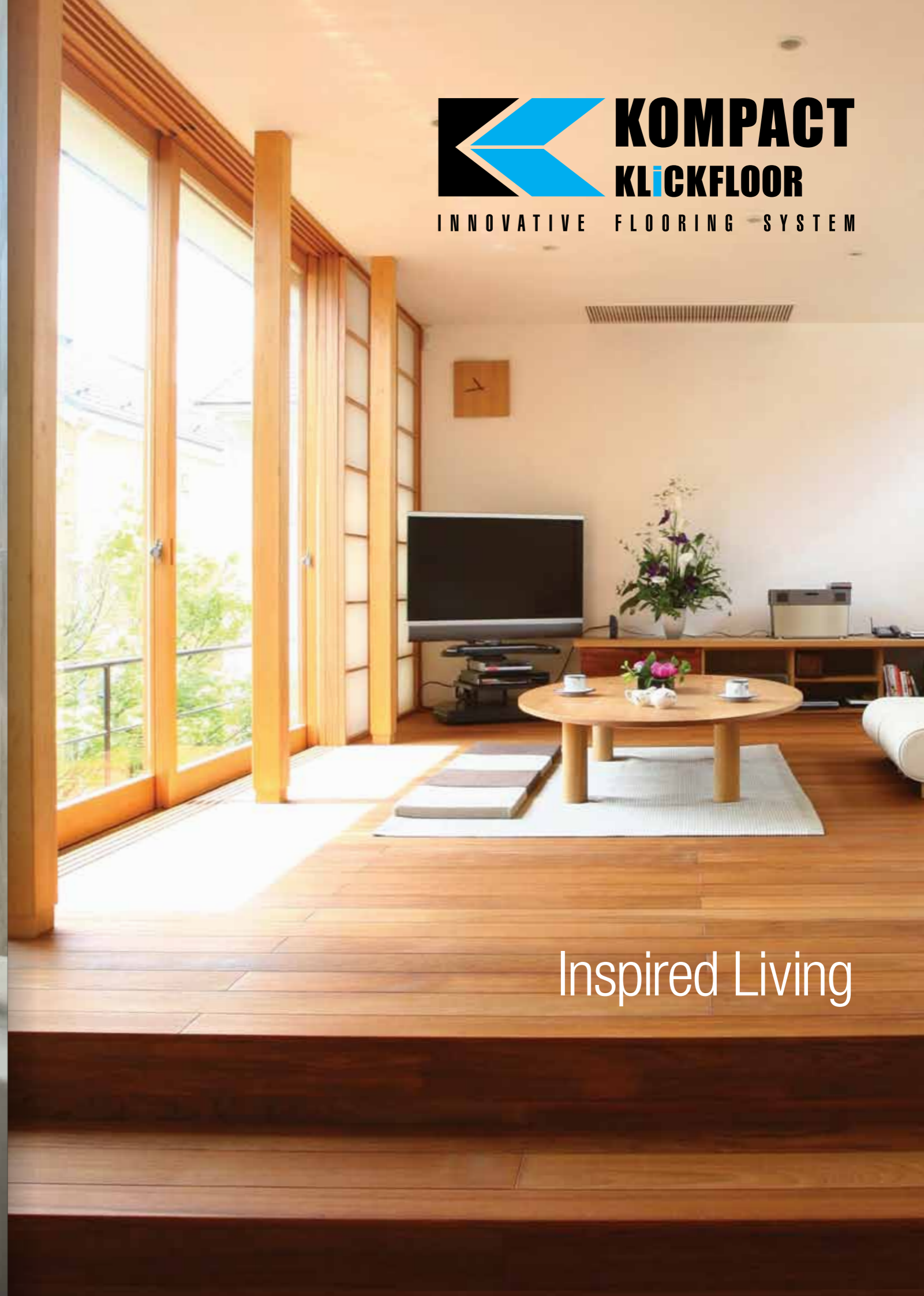




 **KOMPACT**
KLICKFLOOR
INNOVATIVE FLOORING SYSTEM



 **KOMPACT**
KLICKFLOOR
INNOVATIVE FLOORING SYSTEM

Inspired Living

Each vinyl floor tile recreates the subtle textures of natural wood and stone. Bringing a warmth and quality to any room in your home.

Luxury vinyl flooring tiles have a multitude of benefits, and even outperform their natural counterparts in many areas.

- Water resistant
- Scratch resistant
- Easy to maintain
- Sound insulation
- Heat insulation
- 12 year guarantee

- Kitchens
- Bathrooms
- Hallways
- Living rooms
- Bedrooms
- Dining rooms

 **KOMPACT
KlickFLOOR**
INNOVATIVE FLOORING SYSTEM

Kompact KlickFloor is a floating floor concept that does not require the panels to be fixed or glued to the floor. Using a licensed and patented UNICLIC tongue and groove system, each piece locks directly into place. Once fitted this product presents the identical aesthetics to a glued down Luxury Vinyl Floor without the preparation work and fitting hassle associated with glued down flooring.



FLORIDA OAK 24235
 191mm x 1316mm
 1.76m²



TEXAS OAK 24840
 191mm x 1316mm
 1.76m²



CALIFORNIA OAK 24866
 191mm x 1316mm
 1.76m²



ARCTIC PINE 24115
 191mm x 1316mm
 1.76m²



NORWEGIAN PINE 24235
 191mm x 1316mm
 1.76m²



SWEDISH PINE 24966
 191mm x 1316mm
 1.76m²



SACRAMENTO WALNUT 28857
 191mm x 1316mm
 1.76m²



CARIBBEAN PINE 24876
 191mm x 1316mm
 1.76m²

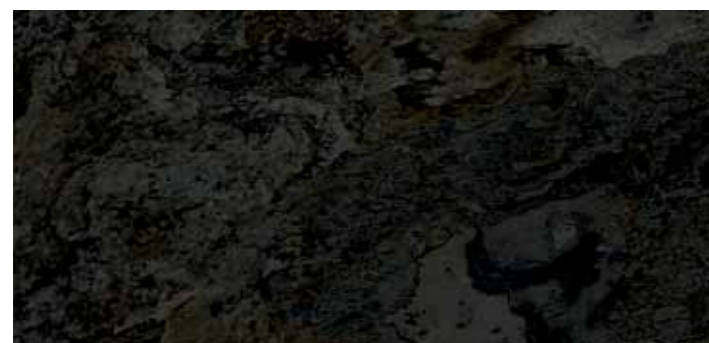


WASHINGTON OAK 24989
 191mm x 1316mm
 1.76m²

KOMPACT KLiCKFLOOR STONE



TORRIDON STONE 46980
324mm x 655mm
1.49m²



GRAMPIAN SLATE 36970
324mm x 655mm
1.49m²



CAIRNGORM SLATE 36976
324mm x 655mm
1.49m²



CHEVIOT SLATE 36930
324mm x 655mm
1.49m²



COTSWOLD STONE 46110
324mm x 655mm
1.49m²



ENGLISH LIMESTONE 36223
324mm x 655mm
1.49m²



LINCOLN LIMESTONE 36976
324mm x 655mm
1.49m²





COAST OAK 24219
 191mm x 1316mm
 1.76m²



CANYON OAK 24244
 191mm x 1316mm
 1.76m²



OREGON OAK 24820
 191mm x 1316mm
 1.76m²



MIRBECK OAK 24584
 191mm x 1316mm
 1.76m²



DAIMYO OAK 24983
 191mm x 1316mm
 1.76m²



WEATHERED WOOD 24962
 191mm x 1316mm
 1.76m²



BLEACHED WOOD 24245
 191mm x 1316mm
 1.76m²



STONEWASH PINE 24960
 191mm x 1316mm
 1.76m²



WHITEWASH PINE 24116
 191mm x 1316mm
 1.76m²



CARMEL WOOD 24880
 191mm x 1316mm
 1.76m²

KOMPACT KLiCKFLOOR HD⁺ STONE



DORSET LIMESTONE 46254
324mm x 655mm
1.49m²



DEVON STONE 40206
324mm x 655mm
1.49m²



CORNISH LIMESTONE 46230
324mm x 655mm
1.49m²



BLACKROCK LIMESTONE 46981
324mm x 655mm
1.49m²



VOLCANIC STONE 40992
324mm x 655mm
1.49m²



METAL STONE 40937
324mm x 655mm
1.49m²



| | | Wood | Stone |
|-------------------------------|--------|-------------|-------------|
| Product Information | | | |
| Level of use | EN 685 | 23 - 31 | 23 - 31 |
| Total thickness | EN 428 | ca. 4.50mm | ca. 4.50mm |
| Wear layer | EN 429 | ca. 0.30mm | ca. 0.30mm |
| Wear layer PUR treatment | | Superguard® | Superguard® |
| Total weight g/m ² | EN 430 | ca. 7.805 | ca. 7.805 |

| Size and Packaging | | | |
|---------------------------|-------------|--------------------------|--------------------------|
| Planks A | EN 427 | 191mm x 1316mm | 324mm x 655mm |
| Box planks A | 7 pcs / box | 1.76m ² / box | 1.49m ² / box |

| Test Results | | | |
|---------------------------|-------------|---|---|
| Inflammability | EN 13501 | Bfl-S1 | Bfl-S1 |
| Scratch resistance | EN 660-2 | Class T | Class T |
| Squareness & straightness | EN 427 | ≤ 0.35mm (Planks A) | ≤ 0.35mm (Tiles) |
| Slip resistance | EN 13893 | DS | DS |
| Slip restraint | DIN 51130 | R9 / R10 | R9 / R10 |
| Residual indentation | EN 433 | ≤ 0.10mm | ≤ 0.10mm |
| Furniture leg resistance | EN 424 | No cracks, no damage | No cracks, no damage |
| Curling | EN 434 | ≤ 2mm | ≤ 2mm |
| Electrical resistance | EN 1081 | ≤ 10 ⁹ hm | ≤ 10 ⁹ hm |
| Dimensional stability | EN 434 | Norm: ≤ 0.25%, average result measured: ≤ 0.05% | Norm: ≤ 0.25%, average result measured: ≤ 0.05% |
| Heat insulation | EN 12524 | 0.25w/(m.K) | 0.25w/(m.K) |
| Thermal resistance R | ISO 8302 | 0.0159m ² .K/W | 0.0159m ² .K/W |
| Electrostatic performance | EN 1815 | < 2kV | < 2kV |
| Fomaldehyde group | EN 717-1 | E1 | E1 |
| Acoustic insulation | ISO 717-1 | 4dB | 4dB |
| Castor chair resistance | EN 42 | No damage to wearlayer, no delamination | No damage to wearlayer, no delamination |
| Stain resistance | EN 423 | Very good | Very good |
| Light fastness | ISO 105 B02 | ≥ 6 | ≥ 6 |
| Underfloor heating | EN 12524 | Suitable, max 27°C | Suitable, max 27°C |
| Resistance to chemicals | EN 423 | Very good | Very good |
| Warranty (year) | | 12 Residential, 5 Commercial | 12 Residential, 5 Commercial |

The warranty covers manufacturing defects and premature wear in the event of normal use.



| | | Wood | Stone |
|-------------------------------|--------|--------------|--------------|
| Product Information | | | |
| Level of use | EN 685 | 23 - 33 - 42 | 23 - 33 - 42 |
| Total thickness | EN 428 | ca. 4.50mm | ca. 4.50mm |
| Wear layer | EN 429 | ca. 0.55mm | ca. 0.55mm |
| Wear layer PUR treatment | | Superguard® | Superguard® |
| Total weight g/m ² | EN 430 | ca. 7.680 | ca. 7.680 |

| Size and Packaging | | | |
|---------------------------|-------------|--------------------------|--------------------------|
| Planks A | EN 427 | 191mm x 1316mm | 324mm x 655mm |
| Box planks A | 7 pcs / box | 1.76m ² / box | 1.49m ² / box |

| Test Results | | | |
|---------------------------|-------------|---|---|
| Inflammability | EN 13501 | Bfl-S1 | Bfl-S1 |
| Scratch resistance | EN 660-2 | Class T | Class T |
| Squareness & straightness | EN 427 | ≤ 0.35mm (Planks A) | ≤ 0.35mm (Tiles) |
| Slip resistance | EN 13893 | DS | DS |
| Slip restraint | DIN 51130 | R9 / R10 | R9 / R10 |
| Residual indentation | EN 433 | ≤ 0.10 mm | ≤ 0.10 mm |
| Furniture leg resistance | EN 424 | No cracks, no damage | No cracks, no damage |
| Curling | EN 434 | ≤ 2mm | ≤ 2mm |
| Electrical resistance | EN 1081 | ≤ 10 ⁹ hm | ≤ 10 ⁹ hm |
| Dimensional stability | EN 434 | Norm: ≤ 0.25%, average result measured: ≤ 0.05% | Norm: ≤ 0.25%, average result measured: ≤ 0.05% |
| Heat insulation | EN 12524 | 0.25w/(m.K) | 0.25w/(m.K) |
| Thermal resistance R | ISO 8302 | 0.0159m ² .K/W | 0.0159m ² .K/W |
| Electrostatic performance | EN 1815 | < 2kV | < 2kV |
| Fomaldehyde group | EN 717-1 | E1 | E1 |
| Acoustic insulation | ISO 717-1 | 4dB | 4dB |
| Castor chair resistance | EN 425 | No damage to wearlayer, no delamination | No damage to wearlayer, no delamination |
| Stain resistance | EN 423 | Very good | Very good |
| Light fastness | ISO 105 B02 | ≥ 6 | ≥ 6 |
| Underfloor heating | EN 12524 | Suitable, max 27°C | Suitable, max 27°C |
| Resistance to chemicals | EN 423 | Very good | Very good |
| Warranty (year) | | 20 Residential, 10 Commercial | 20 Residential, 10 Commercial |

The warranty covers manufacturing defects and premature wear in the event of normal use.



Welcome to your brand new Kompact KlickFloor. Kompact KlickFloor is designed to offer all the stunning detail and outstanding natural beauty of wood or stone, but with quick and easy installation and maintenance.

After a very short installation period, your Kompact KlickFloor will bring you years of pleasure. However, it's important to read these instructions carefully and follow them during fitting, as the guarantee will not apply if the floor is not fitted in accordance with these instructions.

Recommended tools

- Broom and/or vacuum cleaner
- Tape measure
- Pencil
- Set square and ruler
- Utility knife
- Rubber mallet



General conditions

The installation of Kompact KlickFloor is straight forward and follows the same guidelines that apply to all quality resilient tile floors. Good preparation is essential for a trouble-free installation. Kompact KlickFloor can be laid on concrete, timber, stone and many other subfloors, which have been suitably prepared.

Site conditions must comply with the relevant national regulations. Kompact KlickFloor is not suitable for external installation or unheated locations but it can be used with under-floor heating providing it is switched off for 24 hours before and after laying (the maximum permitted surface temperature is 28°C/81°F). We recommend that the installed floor should not be allowed to cool below 13°C during its service life.

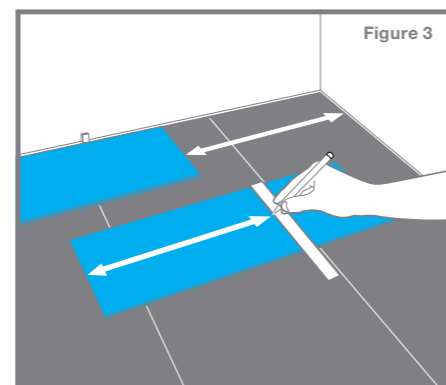
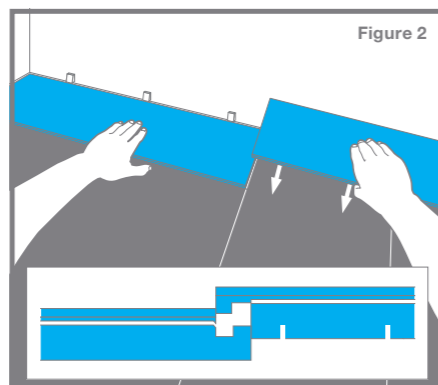
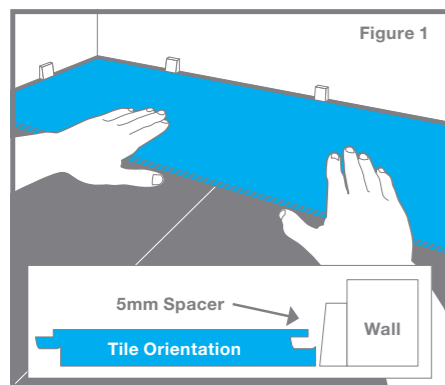
Tiles and sub-floor must be allowed to stabilise to a consistent temperature between 18°C and 27°C (64°F and 81°F) for a period of 24 hours before and after installation.

Tiles must be stored flat.

Following installation, Kompact KlickFloor should be protected from heavy traffic for 24 hours and must not be washed for 24 hours. Always follow other manufacturers' recommendations when using their proprietary materials for sub-floor preparation.

Preparation

- 1 The floor should be fitted at a room temperature of minimum 18°C/62°F and maximum 27°C/80°F.
- 2 Before installation, check all panels in daylight for possible defects or discrepancies in colour or shine.
- 3 Check that the tongue and groove of the click profile is free from dirt and undamaged.
- 4 For best results mix at least two packs when fitting to avoid repetitions in the pattern. It is also preferable only to use material from the same batch in a single room.
- 5 The surface beneath the floor must be sufficiently prepared in advance to guarantee successful fitting of the floor covering. In particular, it must be clean, dry, smooth, firm, level, free from defects and not contaminated with grease, oil or chemicals.



Kompact KlickFloor is a "floating" floor. Never glue or fix the panels to the surface below. The flooring can be installed wall-to-wall, however in large areas (greater than 50m²) or where the floor may be exposed to unusually wide temperature ranges (such as where underfloor heating is used, in a conservatory or areas adjacent to a south facing window), then it is advisable to use a 5mm space around the edge, as appropriate. For surfaces larger than 50m², we advise that an expansion joint of 5mm is created around the perimeter of the room. In addition, should a single wall or run be longer than 10 linear metres, then a 5mm expansion joint should be allowed around the perimeter. If you are uncertain of the requirements, please contact your retailer who can confirm the exact requirements.

Kompact KlickFloor system panels can be joined in two different ways; either tongue-in-groove or groove-in-tongue. The simplest procedure, however, is groove-in-tongue. The advantage of Kompact KlickFloor is that it allows you to choose your own starting position.

Moreover, you may work either from left to right or from right to left, whichever is best for you. Depending on the direction in which you work, you are advised to begin from either a corner or a door. It is advisable to begin with the groove side of the plank towards the wall and work from left to right.

- 1 Measure the room carefully to determine the central axis, from which the first row to be laid is outlined.
- 2 Check whether the first row of panels needs to be narrowed. If not, the lower groove lip of the first row of panels needs to be removed. Use a utility knife to neatly cut off the lower groove lip.
- 3 Begin by laying the first row in the corner of the room on your left hand side as you are looking at the wall. Always work from left to right and with the tongue towards yourself (Fig 1).

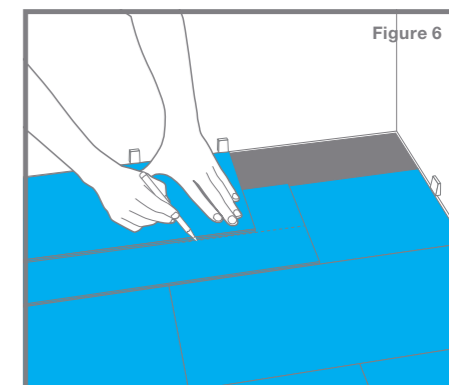
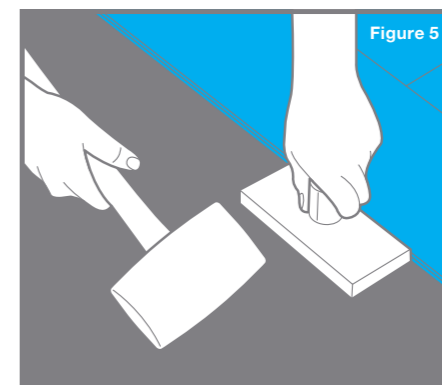
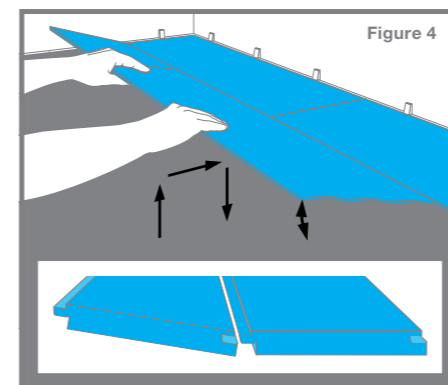
Lay the first row in a straight line and click the head ends together. Put the short side of the profile into head end of the previous panel and press the panel

downwards. It is recommended to use a rubber mallet for connecting the head ends so that the joint fits securely. Continue laying the first row in the same way until you get to the last piece (Fig 2).

- 5 For the last piece, measure the last plank to ensure a tight fit to the wall. Then cut away the marked piece and fit the end panel in the same way as the previous panels. When cutting the panel with a utility knife, make sure that you cut through the wear layer before breaking the panel (Fig 3).
- 6 For an attractive and natural appearance, we advise you to use the piece left over from row 1 as the first piece in the next row, as long as the remaining piece is at least 1/3 of the total plank length. Do this for all subsequent rows.
- 7 Fit the second row as you did for the first: start on the left side and slide the groove of the panel under an angle of about 25° over the tongue of the previous row and click the groove into the tongue by laying down the panel while pushing it firmly against the first row (Fig 4).
- 8 Then fit the second panel by sliding the groove under at an angle of 25° into the tongue of the previous row. Position the corner of the head end against the previous panel and then drop the short side of the profile into the head end of the previous panel and push downwards.

Use a rubber mallet for connecting the head ends so that the joint fits securely. Repeat until you reach the end of the row.

- 9 To ensure a firm Kompact KlickFloor installation, it is recommended that the planks are tapped together along the long edge with a tapping block and a rubber mallet. This will ensure that the Kompact KlickFloor mechanism is firmly locked during installation, providing a secure joint and avoiding any movement after the installation has been completed (Fig 5).
- 10 To fit the last row of panels you will usually need to narrow them. Do this as follows: lay a panel on top of the previous row with the groove towards the wall, lay another panel upside down up to the edge of the wall and mark the panel underneath. Cut the panel to size and fit the last row (Fig 6).
- 11 Door posts and heating pipes also need to be individually fitted. First cut the panel to the right length. Then place the panel next to the object and draw the correct fitting. Next, cut the panel to size. Doorposts can also be sawn to size if necessary to lay the floor beneath them. For cutting around difficult areas such as door posts, heating pipes and other interior furniture; the use of a Jigsaw with the correct plastic cutting blades is suitable and will avoid unsightly cuts at the perimeter of the room.



Safety and Prevention of Accidents

- (i) Wet floors can be slippery. Ensure suitable entrance matting is used to prevent the entry of water. Any water on the floor, even small drips from umbrellas etc., must be mopped up at once.
- (ii) Spillages of water, grease, food, chemicals and other foreign materials may also cause the floor to become slippery. Wipe up spills immediately with an absorbent cloth and then wash thoroughly with Xtrafloor Spot Cleaner or Cleaner Maintainer, properly diluted, until completely clean. Rinse and allow to dry thoroughly.
- (iii) Many furniture polishes and glass cleaners contain chemicals and silicones which, in contact with the floor, may cause slipperiness. Even small amounts of overspray can create a hazard.
- (iv) When washing, exclude traffic from all treated areas until completely dry. Even damp floors can be slippery.
- (v) Be careful with the use of airborne insecticide, disinfectant and perfume sprays. Some contain oils or solvents which may settle on the floor in sufficient quantity to cause slipperiness.

Maintenance and Protection

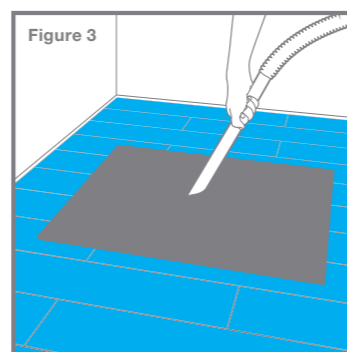
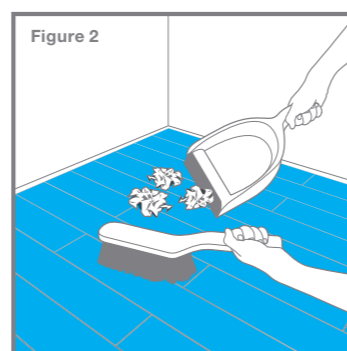
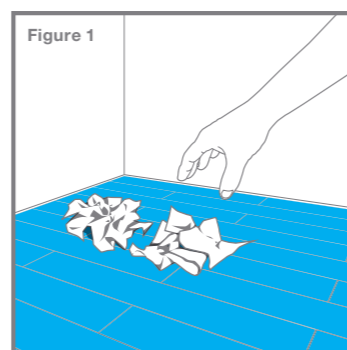
- (i) Vacuum or brush the floor regularly to remove dust and grit.
- (ii) Suitable entrance barrier matting or walk off mats when properly serviced can effectively remove many abrasive and foreign materials from foot traffic and cut down on tracked-in water. These will reduce the maintenance requirement in entry areas and extend the life of the floor. A minimum of two full strides of entrance matting is recommended.
- (iii) Avoid rubber or latex backed mats as these may leave stains.
- (iv) Some airborne insecticides may also harm the surface of the tile.
- (v) Protect against scratching from furniture feet by using wide free-moving castors, glides, rollers or felt pads. Use furniture cups under heavy items or appliances to prevent indentation.
- (vi) Do not use small or narrow castors or those with crowned tread, as they can damage the floor.
- (vii) Do not allow cigarettes, matches or other very hot items to contact the floor.

Selection of Maintenance Products

- (i) Xtrafloor supplies a range of maintenance products that are recommended for cleaning Kompact KlickFloor. Products containing soap or unsuitable detergents such as washing up liquid may leave hard-to-remove film or residue on the surface. These can detract from the appearance and may be slippery.
- (ii) Do not use products at too high a concentration as this may leave a surface residue.
- (iii) Xtrafloor maintenance products are carefully manufactured to produce the highest performance when used in accordance with the instructions on the containers.

Daily sweeping and dust mopping

- (i) Pick up litter and thoroughly sweep the floor area (Fig 1).
- (ii) Pick up debris with dustpan and brush or vacuum (Fig 2).
- (iii) Vacuum walk-off mats and crevices at entrance(s) (Fig 3).



All floors should be swept and dust mopped daily, following which soiling and marking can be removed using the appropriate method described below. Before commencing work, put out signs to warn people that cleaning is in progress.

Manual mopping - Ideal for small or congested areas.

Manual mopping is used for soil removal in small or congested areas (including within large floors) and some mark removal. Spray cleaning may be required for heavier surface marking. (Note: In conditions of heavy soiling, perform a pre-wash by preparing a solution of Xtrafloor Cleaner Maintainer diluted in accordance with the label and pre-wash heavily soiled areas).

- (i) Using a two-bucket mopping system, apply solution using well-wrung mop to remove soiling (Fig 4).
- (ii) Mop using overlapping strokes (Fig 5).
- (iii) Rinse the mop frequently and change the solution as necessary.
- (iv) Allow entire floor area to dry thoroughly.
- (v) Remove "Caution" signs. Ensure all equipment is cleaned thoroughly after use and stored safely.

Spray Cleaning - Ideal for small / medium size areas

Spray cleaning can be used for light soil removal in small/ medium size areas and removal of most scuff marks from all floor sizes. Pre-wash (see Manual mopping) if the floor is heavily soiled.

- (i) Follow daily sweeping and dust mopping instructions.
- (ii) Pour diluted Xtrafloor Cleaner Maintainer solution into a suitable spray container.
- (iii) Apply a fine mist of liquid on to an area of approximately 2 square metres at a time. Use a rotary buffing machine (approx. 450 rpm) fitted with a red 3M nylon scrubbing pad (or equivalent) (Fig 6).
- (iv) Work in parallel overlapping passes until the floor is clean and dry (Fig 7).
- (v) Remove "Caution" signs. Spray Clean/Spray Polish 2 sq.m at a time.

Scrubber Drying - Ideal for large areas

Scrubber dryers may be used for high productivity removal of soiling and some scuff mark removal. Spray cleaning may be required to remove heavier surface marking.

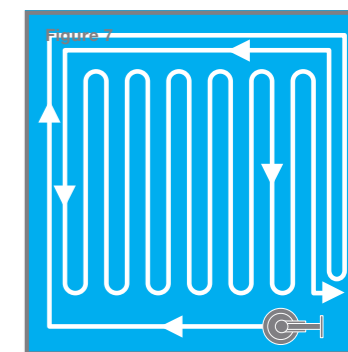
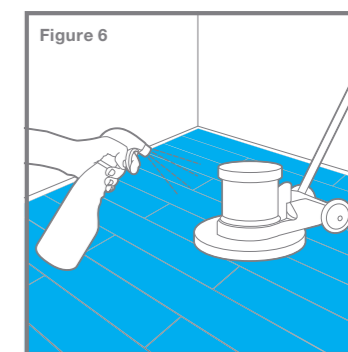
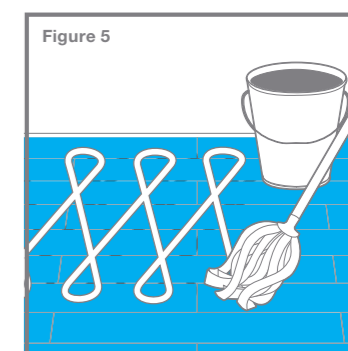
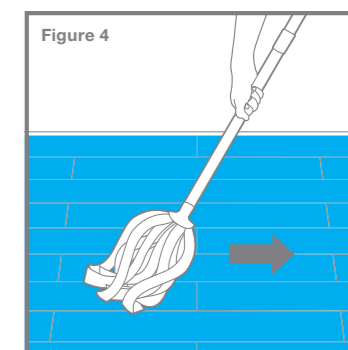
- (i) Follow daily sweeping and dust mopping instructions.
- (ii) Prepare solution of Xtrafloor Cleaner Maintainer as per label and pour into the dispensing tank. The scrubber dryer should be fitted with a red 3M nylon scrubbing pad (or equivalent).
- (iii) Scrub entire floor area.
- (iv) Remove "Caution" signs. Ensure all equipment is cleaned thoroughly after use and stored safely.

Tips - Dealing with spills

- (i) Spills of water, grease, food, chemicals and other foreign matter may cause the floor to become slippery.
- (ii) Wipe up spills immediately with an absorbent cloth and then wash thoroughly using Xtrafloor Spot Remover as directed on the label or properly diluted Xtrafloor Cleaner Maintainer until the spill area is completely clean.
- (iii) Allow the floor to dry thoroughly.

Notes

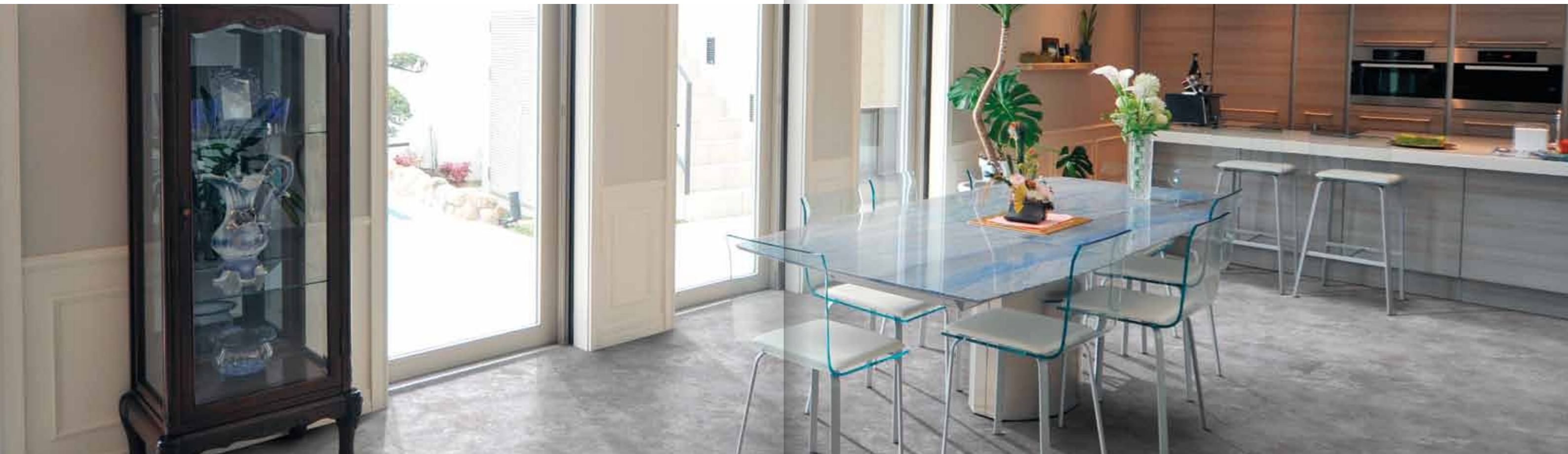
- (i) Kompact KlickFloor products should not be buffed with any pad more abrasive than a red 3M pad (or equivalent).
- (ii) Entrance mats, when properly serviced, can effectively remove any abrasive and foreign materials from foot traffic and cut down on tracked in water. Kompact KlickFloor recommend a minimum of two full strides of entrance matting.



Whilst Kompact KlickFloor has made every attempt to ensure that this information is accurate and reliable at the time of its publication; we cannot accept responsibility for any errors, omissions, inaccuracies or any changes that have occurred since the date of publication or for the results obtained from the use of such information.

Poor maintenance can lead to a slippery floor, which can cause accidents. Please heed the precautions above to keep your floor as safe as possible.

Whilst Kompact KlickFloor has made every attempt to ensure that this information is accurate and reliable at the time of its publication; we cannot accept responsibility for any errors, omissions, inaccuracies or any changes that have occurred since the date of publication or for the results obtained from the use of such information.



Appropriate maintenance procedures will help preserve the appearance and extend the life of your Komcompact KlickFloor. The frequency of maintenance will depend on the amount and type of traffic, degree of soiling and the floor colour and type. Where possible, prevent dirt from reaching the floor. A suitable barrier matting system will help prevent soiling and abrasive material from entering a building and make maintenance easier.

Daily Sweeping and Dust Mopping

Thoroughly sweep floor area using non-treated dust mop or dustpan and brush. Maintain barrier matting by shaking externally or vacuuming.

Manual Mopping

Prepare solution of Xtrafloor Cleaner Maintainer diluted in accordance with instructions on the container.

- (i) Apply a solution using a well wrung mop to remove soiling.
- (ii) Mop using overlapping strokes.
- (iii) Rinse the mop frequently and change the solution as necessary.
- (iv) Dirty water will leave an unsightly residue on the surface.

Allow entire floor area to dry thoroughly. Ensure all equipment is cleaned thoroughly after use and stored safely. Any scuff marks that are not removed during routine cleaning may be gently rubbed with a non-abrasive or nylon pad of the type used on non-stick cookware.

Tips - Dealing with spillages

- (i) Spills of water, grease, food, chemicals and other foreign matter may cause the floor to become slippery.
- (ii) Wipe up all spills immediately with an absorbent cloth and then wash thoroughly with Xtrafloor Spot Remover until the spill area is completely clean.
- (iii) Rinse and allow to dry thoroughly.

Xtrafloor maintenance products as recommended by Komcompact KlickFloor

Our range of cleaning products have been specially formulated for use with Komcompact KlickFloor products and most vinyl, rubber and linoleum floors.

Xtrafloor Cleaner Maintainer

Our concentrated cleaner has a fresh aroma for routine cleaning. Suitable for use with all cleaning methods including manual, spray buffing and scrubber-drying. Availability: 1Ltr / 2.5Ltr

Xtrafloor Spot Remover

A ready to use cleaner with a fresh aroma. Formulated for removal of spills and other deposits Availability: 500ml



Xtrafloor underlay - designed to be the perfect partner for Komcompact KlickFloor

Adding to the already long list of benefits of using Komcompact KlickFloor, Xtrafloor underlay provides a fantastic foundation to your floor. Consisting of up to 93% natural raw materials, it is particularly suited for the floating installation under Komcompact KlickFloor.

- Smooths out small subfloor irregularities
- Easier installation
- Improved sound insulation and comfort
- Eco-friendly

Technical data

| | |
|-----------------------------------|--|
| Composition: | Permanent resilient underlayment including mineral fillers and Polyurethane binder |
| Thickness: | Approx. 1.5 mm (+/- 0.1 mm) |
| Roll format: | Approx. 10 m x 1 m (10m ² per roll) |
| Weight per sqm: | 1.5 kg/m ² |
| Weight per roll: | 15 kg/roll |
| Fire behaviour: | Bfl - S1 as per EN 13501-1 |
| Footfall sound absorption: | Approx. 11db/EN 140-5 |